

**ADDENDUM - 1**

TO  
CONSTRUCTION DOCUMENTS  
BID DRAWINGS AND SPECIFICATIONS

02-11-2019

---

This Addendum modifies, amends and supplements designated parts of the Construction Documents, Bid Set, for the construction of the Renovation of the Harbor Hill Complex project, dated 01-24-2019, and is hereby made a part thereof by reference, and shall be as binding as though inserted in its entirety in the locations designated hereunder. It shall be the responsibility of all Contractors Subcontractors and Suppliers proposed for the various parts of the work, to incorporate any changes or modifications contained in this Addendum. No claims for additional compensation, due to lack of knowledge of this Addendum will be considered.

**ADDENDUM TO THE BID DRAWINGS:**

Addendum to the Bid Drawings contains numbered item descriptions and includes **4** page(s) including this cover.

**ADDENDUM TO THE BID SPECIFICATIONS:**

Addendum to the Bid Specifications contains numbered item descriptions and includes **4** page(s) including this cover.

Description items are grouped and numbered by specification section number, i.e., 033000.1 is a modification or addition to the specification section 033000.

---

## ADDENDUM

ADDENDUM #: 001  
PROJECT NAME: Renovation of the Harbor Hill Complex  
PROJECT NO.: P30347  
DATE: 02-11-2019

---

This Addendum modifies, amends, and supplements designated parts of the Bid Documents for the Renovation of the Harbor Hill Complex in Provincetown, MA dated 01-24-2019, and is hereby made a part thereof by reference, and shall be binding as though inserted in its entirety in the locations designated hereunder. It shall be the responsibility of each General Bidder to notify all subcontractors and suppliers they propose to use for the various parts of the work of any changes or modifications contained in this Addendum. No claims for additional compensation due to lack of knowledge of this Addendum will be considered. The bid date and time shall not change.

### REVISIONS TO CONSTRUCTION DOCUMENTS – SPECIFICATION CHANGES

- Section: 10 31 00      Manufactured Fireplaces  
Item 1-1                01 General
- 1.01      General Scope; Remove all existing manufactured fireplaces and seal chimney flues as shown in architectural drawings. **Secure existing flue at base in process of removing firebox.**
- 1.02      Locations:  
A. Living rooms of all units, typ.
- 02 Products
- 2.01      Fireplace; existing wood burning fireplace in plaster wall opening
- 2.02      Flue; B-vented metal flue
- 2.03      Chimney; Chimney cap
- 03 Execution
- 3.01      Remove existing metal firebox. Secure existing flue at base. Board wall where opening remains to match surrounding finish. See Section 07 62 00 Sheet Metal Flashing and Trim, 09 91 23 Interior Painting, and 06 10 00 Rough Carpentry for related scope.
- Section: 26 00 00      2.8 Intrusion Detection System  
Item 1-2                **Removed from specifications**
- Section: 26 00 00      2.9 Telephone System  
Item 1-3                The Telephone system not part of these specifications. **Existing services to remain and to be relocated and be relocated per Architects plan. Refer to the architects plan.**
- Section: 26 00 00      2.10 Television System  
Item 1-4                The Television system not part of these specifications. **Existing services to remain and to be relocated and be relocated per Architects plan. Refer to the architects plan.**

Section: 26 00 00      2.11 Data Network System and Requirements  
Item 1-5                The Data Network system not part of these specifications. **Existing services to remain and to be relocated and be relocated per Architects plan. Refer to the architects plan.**

REVISIONS TO CONSTRUCTION DOCUMENTS – DRAWING CHANGES

E-1.0-4                See attached drawing. TV outlet added to bedroom.  
Item 1-6

CLARIFICATION TO CONSTRUCTION DOCUMENTS – SPECIFICATION

Section: 28 00 00      **Included in scope of Electrical File Sub Bid**

CLARIFICATION TO CONSTRUCTION DOCUMENTS – DRAWINGS

**No fire alarm scope at Building 5.**

ELECTRICAL SYMBOLS LIST	
SYMBOL	DESCRIPTION
[Symbol]	ELECTRICAL PANEL
[Symbol]	ELECTRICAL UTILITY METER
[Symbol]	HOMERUN TO PANELBOARD; UNLESS OTHERWISE INDICATED SHALL BE A 20A-1P BREAKER
[Symbol]	BRANCH CIRCUIT WIRING; CONCEALED IN WALL OR CEILING
[Symbol]	BRANCH CIRCUIT WIRING; SWITCHED
[Symbol]	DUPLEX WALL MOUNTED RECEPTACLE
[Symbol]	SPECIAL PURPOSE CONNECTION
[Symbol]	ELECTRIC MOTOR, FAN
[Symbol]	LEAK DETECTOR
[Symbol]	HEAT DETECTOR
[Symbol]	SMOKE DETECTOR
[Symbol]	SURFACE MOUNTED DOWNLIGHT FIXTURE
[Symbol]	WALL LIGHT FIXTURE
[Symbol]	SURFACE MOUNTED RECESSED DOWNLIGHT FIXTURE
[Symbol]	SINGLE POLE TOGGLE SWITCH
[Symbol]	CEILING MOUNTED HORN ONLY FIRE ALARM UNIT
[Symbol]	FIRE ALARM RELAY PANEL
[Symbol]	CEILING MOUNTED STROBE ONLY

ABBREVIATIONS & SUBSCRIPTS			
SYMBOL	DESCRIPTION	SYMBOL	DESCRIPTION
A/AMP	AMPERE	MCB	MOLDED CASE CIRCUIT BREAKER
AC	ALTERNATING CURRENT	MIN	MINIMUM
ACU	AIR CONDITIONING UNIT	MH	METAL HALIDE
AFCI	ARC FAULT CIRCUIT INTERRUPTION	MLO	MAIN LUGS ONLY
AFB	ABOVE FINISHED FLOOR	N/A	NOT APPLICABLE
AFG	ABOVE FINISHED GRADE	NEC	NATIONAL ELECTRIC CODE
AIC	ARC INTERRUPTING CURRENT	NIC	NOT IN CONTRACT
AWG	AMERICAN WIRE GAUGE	NM	NONMETALLIC
C	CONDUIT	NTS	NOT TO SCALE
C.B.	CIRCUIT BREAKER	O	OPEN
CU	COPPER	P	POLE; PUMP
D	DRYER	PE	PRIMARY ELECTRIC
DN	DOWN	PF	POWER FACTOR
DWG	DRAWING	PH, Ø	PHASE
EFG	EXHAUST FAN	PNL	PANEL
EH	ELECTRIC HEATER	PVC	POLYVINYL CHLORIDE CONDUIT
ELEC	ELECTRICAL	R	RANGE
ERV	ENERGY RECOVERY VENTILATOR	REF	REFRIGERATOR
F	FAHRENHEIT	RGS	RIGID GALVANIZED STEEL CONDUIT
FA	FIRE ALARM	RM	ROOM
FACP	FIRE ALARM CONTROL PANEL	SB	SOUNDER BASE
G	GROUND	SEP	SEWER EJECTOR PUMP
GFCI	GROUND FAULT CIRCUIT INTERRUPTER	ST	STOVE TOP
H	RANGE HOOD LIGHT; HUMIDIFIER	SP	SUMP PUMP
HZ	HERTZ	SPEC	SPECIFICATION
IH	INSTANTANEOUS HOT WATER	TV	TELEVISION
IN	INCHES	TYP	TYPICAL
JB, J	JUNCTION BOX	V	VOLTS
KMIL	THOUSAND CIRCULAR MILS	VA	VOLT AMPERE
KEH	KITCHEN EXHAUST HOOD	VAC	VOLTS ALTERNATING CURRENT
KVA	KILOVOLT AMPERE	WAT;	WATT; WIRE
KW	KILOWATT	WA	WASHER
LD	LEAK DETECTION	WH	WATER HEATER
MAX	MAXIMUM	WP	WEATHERPROOF
M	MICROWAVE		
MCB	MAIN CIRCUIT BREAKER	o	MOUNTED ABOVE COUNTER HEIGHT

**WIRING NOTES**

- UNLESS OTHERWISE INDICATED, ALL BRANCH CIRCUIT WIRING WITHIN BUILDING SHALL BE 2#12, 1#12G NON-METALLIC SHEATHED CABLE. (TYPICAL).
- CONTRACTOR TO COORDINATE WITH LIGHT FIXTURES FOR THE USE OF 90° MC CABLE WHEN REQUIRED.
- ALL WIRING SHALL BE PLENUM RATED, INSTALLED IN MC CABLE AND CONCEALED IN WALLS OR ABOVE THE CEILING. NO EXPOSED WIREMOLD OR CONDUIT SYSTEMS WILL BE ALLOWED.

**GENERAL ELECTRICAL NOTE**

REFER TO PANELBOARD SCHEDULES AND ONE-LINE RISER DIAGRAM FOR FURTHER CIRCUITING INFORMATION ON LIGHTING CONTROL PANELS, AND MECHANICAL EQUIPMENT.

**SWITCH, DEVICE & RECEPTACLE NOTES**

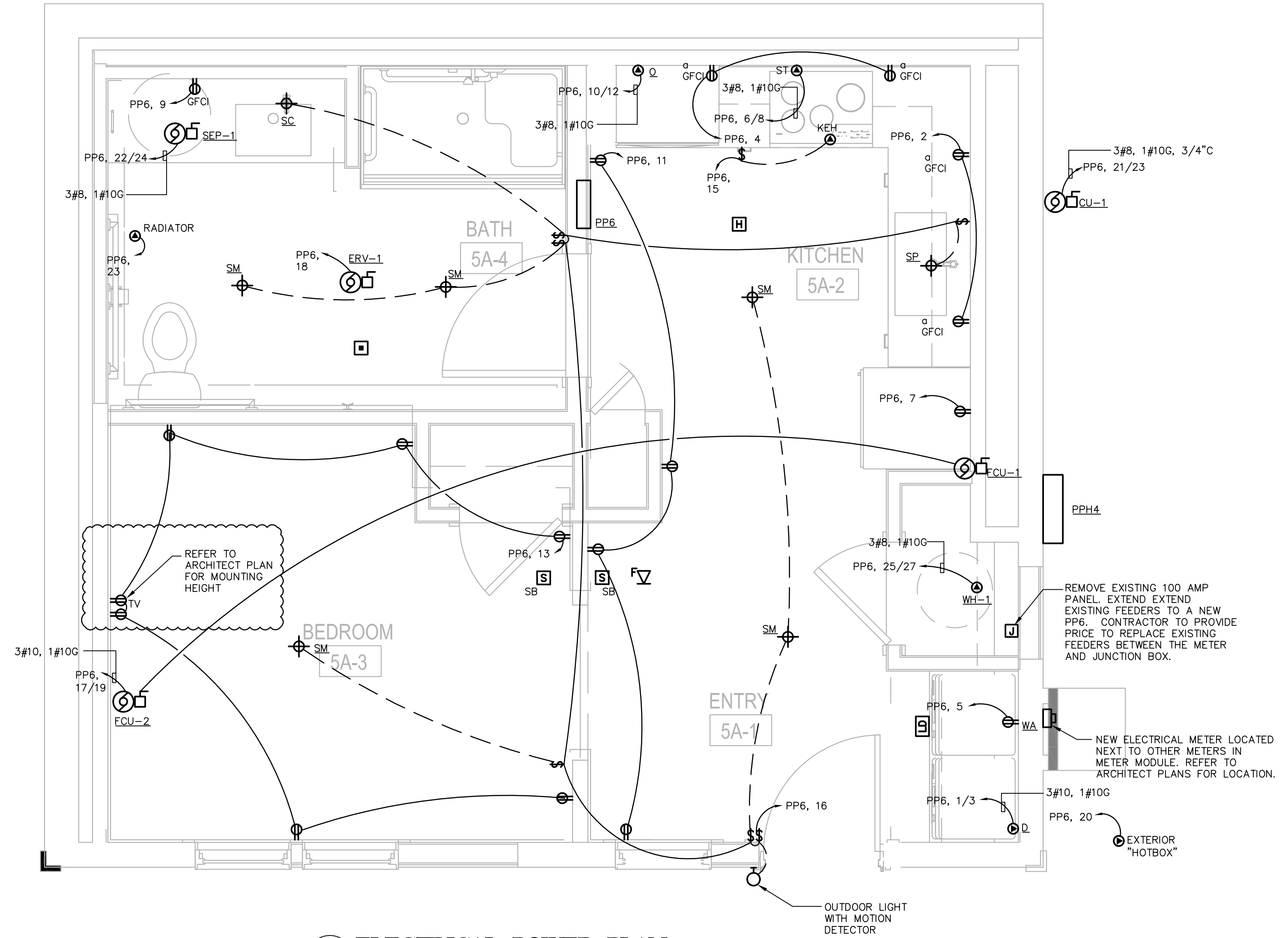
- ALL SWITCHES, OUTLETS, RECEPTACLES, TELEPHONES & DATA OUTLETS ARE SHOWN IN AN APPROXIMATE LOCATION. THE CONTRACTOR MUST INSTALL THE BACK BOX FOR EACH DEVICE, PRIOR TO WIRING, FOR FINAL PLACEMENT APPROVAL BY THE ARCHITECT, ENGINEER, & OWNER. A PORTION OF THESE DEVICES MAY BE RELOCATED, BY THE ARCHITECT OR ENGINEER, PRIOR TO FINAL WIRING.
- COORDINATE LOCATION AND REQUIREMENTS OF POWER OUTLETS WITH APPLIANCE MANUFACTURER'S REQUIREMENTS.

**ELECTRICAL DEMOLITION NOTES**

- ALL DEVICES INDICATED SHALL BE REMOVED UNLESS NOTED OTHERWISE. REMOVAL SHALL BE COMPLETE INCLUDING BOXES, BRACKETS, HANGERS AND BRANCH CIRCUIT WIRING BACK TO SOURCE PANELBOARD OR LAST ACTIVE DEVICE TO REMAIN (EXCEPT WHERE NOTED).
- CONTRACTOR SHALL BE RESPONSIBLE FOR LEGAL DISPOSAL OF MERCURY CONTAINING LAMPS AND PCB BALLASTS.
- CONTRACTOR SHALL BE RESPONSIBLE FOR STORAGE AND HANDLING OF EXISTING TO BE RELOCATED EQUIPMENT.
- CONTRACTOR SHALL MODIFY EXISTING CIRCUITS, WHEN EXISTING DEVICES ARE REMOVED, AS REQUIRED TO MAINTAIN CIRCUIT CONTINUITY.
- THIS PLAN IS DIAGRAMMATIC AND NOT INTENDED TO DEPICT THE ENTIRE SCOPE OF ELECTRICAL DEMOLITION. ADDITIONAL DEMOLITION AND MODIFICATION WORK NOT SHOWN SHOULD BE ANTICIPATED. REFER TO ARCHITECT PLANS FOR ADDITIONAL DEMOLITION SCOPE.
- PRIOR TO SUBMITTING BID, VISIT SITE AND IDENTIFY EXISTING CONDITIONS AND DIFFICULTIES THAT WILL AFFECT WORK TO BE PERFORMED. NO COMPENSATION WILL BE GRANTED FOR ADDITIONAL WORK CAUSED BY UNFAMILIARITY WITH SITE CONDITIONS THAT ARE VISIBLE OR READILY IDENTIFIED BY EXPERIENCED OBSERVERS. INCLUDE IN THE BID ALL DEMOLITION WORK REQUIRED.

**GENERAL NOTES**

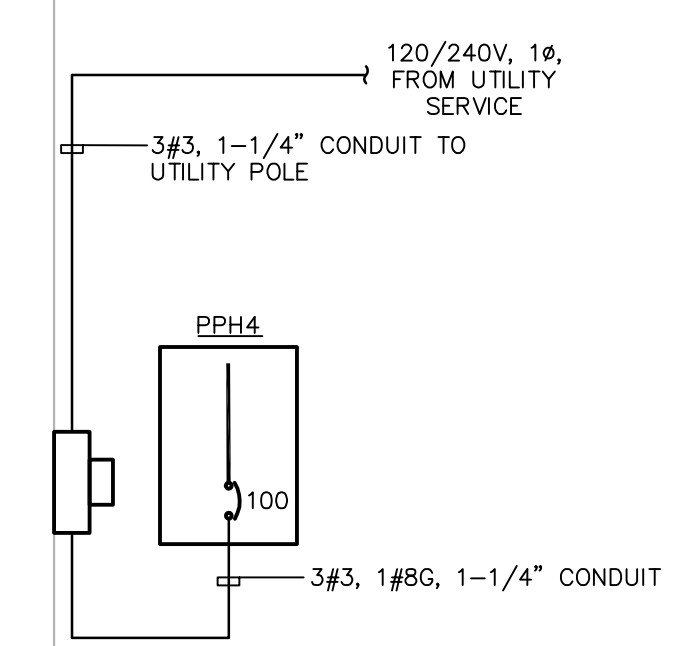
REFER TO ARCHITECTURAL SPECIFICATIONS FOR ALL LIGHTING FIXTURES  
ALL DEVICES AND WIRING TO BE NEW PER PLANS



**1 ELECTRICAL POWER PLAN**  
1/2" = 1'-0"

Panel: PPH4							
Location:		OUTSIDE BLDG 4		Volts:		120/240V	
Supply From:		UTILITY METER		Phases:		1	
Mounting:		SURFACE		Wires:		3	
Enclosure:		NEMA 3R		Mains Type:		CU	
				Mains Rating:		225A	
				MCB Rating/MLO:		100A MCB	
CKT	Circuit Description	Trip	Poles	A	B	Circuit Description	CKT
1	WELL PUMP	30	2			SPARE	2
3	-	-	-			SPARE	4
5	GROUND LIGHTS	20	1			SPARE	6
7	SPARE	20	1			SPARE	8
9	SPARE	20	1			SPARE	10
11	SPARE	20	1			SPARE	12
13	SPARE	20	1			SPARE	14
15	SPARE	20	1			SPARE	16
17	SPARE	20	1			SPARE	18
19	SPARE					SPARE	20
21	SPARE					SPARE	22
23	SPARE					SPARE	24
25	SPARE					SPARE	26
27	SPARE					SPARE	28
29	SPARE					SPARE	30
Phase Load (kVA):		0.00		0.00			
Phase Amps:		0 A		0 A			

Panel: PP6							
Location:		KITCHEN		Volts:		120/240V	
Supply From:		UTILITY METER		Phases:		1	
Mounting:		RECESSED		Wires:		3	
Enclosure:		NEMA 1		Mains Type:		CU	
				Mains Rating:		125A	
				MCB Rating/MLO:		100 MCB	
CKT	Circuit Description	Trip	Poles	A	B	Circuit Description	CKT
1	Dryer	30	2			Kitchen Receptacle	2
3	-	-	-			Kitchen Receptacle	4
5	Washer	20	1			Stove Top	6
7	Refrigerator	20	1			-	8
9	Bathroom Recep	20	1			Wall Oven	10
11	Entranceway-Kitchen Circuit	20	1			-	12
13	Bedroom Circuit	20	1			Bathroom Exhaust Fan	14
15	KEH	20	1			Lights	16
17	FCU-17/FCU-2	20	2			ERV	18
19	-	-	-			HOT BOX for Meter	20
21	CU-1	40	2			SEP	22
23	-	-	-			-	24
25	WH-1	40	2			SPARE	26
27	-	-	-			SPARE	28
29	RADIATOR	20	1			SPARE	30
Phase Load (kVA):		0.00		0.00			
Phase Amps:		0 A		0 A			



**2 PARTIAL ELECTRICAL RISER DIAGRAM**  
N.T.S.

